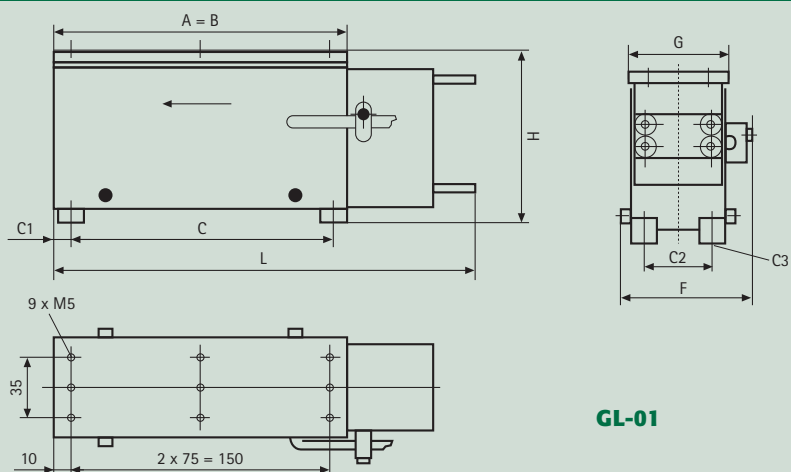
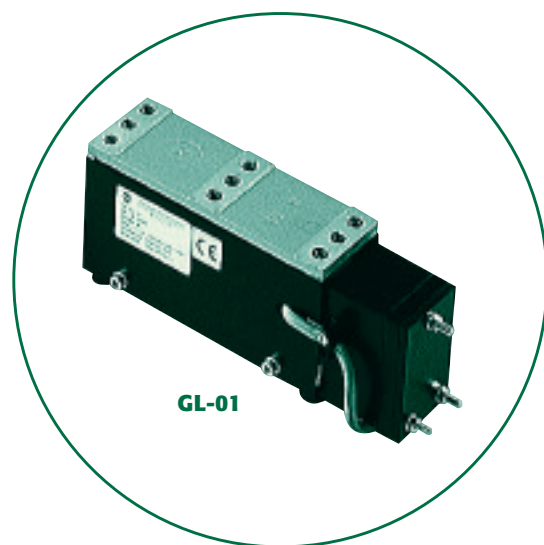
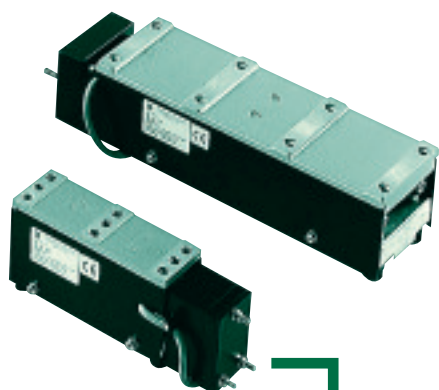


Series GL

The GL series of RNA linear feeders have horizontally fitted springs instead of the traditional vertical arrangement. Feeding resembles more of a sliding motion as opposed to the "projecting" of parts commonly seen on other linear feeders. The smooth and gentle movement provided by this linear means that it is highly recommended when feeding and transferring thin components.



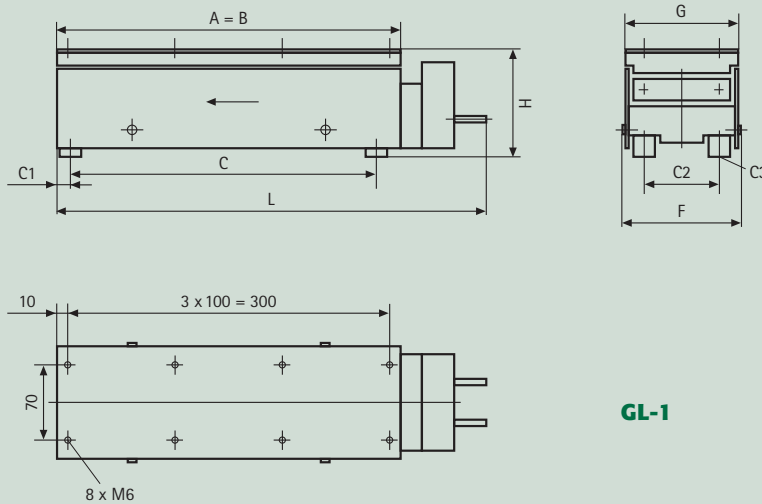
Type	GL-01
A = Vibrator top length	170
B = Length of counter mass	170
C = Fastening measure	152
C1 =	10
C2 =	40
C3 =	4 x M4
F = Total width	ca. 78
G = Vibrator top width	58
H = Total height	100 +/- 2
L = Total length	ca. 245
Weight of the linear feeder drive unit	3,8 kg
Max. load of the linear track (Including Components)	3 kg
Max. track length	400
Current input	0,55 (A)
Protection class	IP54
Vibrating frequency	100 Hz
Connection cable length (to control box)	1.400
Suitable stand type	
(see page 18)	UTL 1



The difference between track length and vibrator top length should be mounted to a ratio of: 1/3 infeed side 2/3 discharge side



Series GL



GL-1

Type

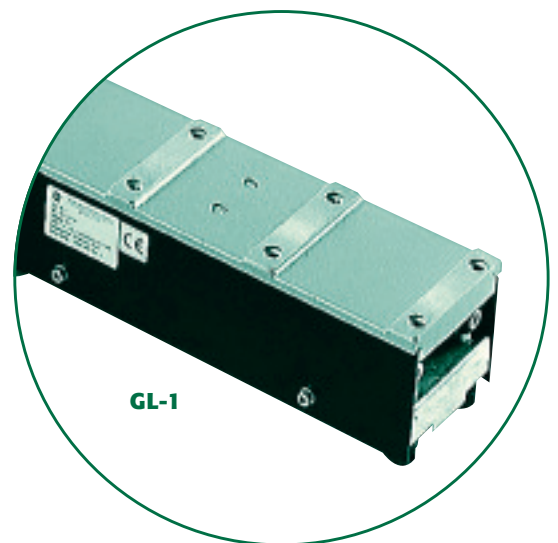
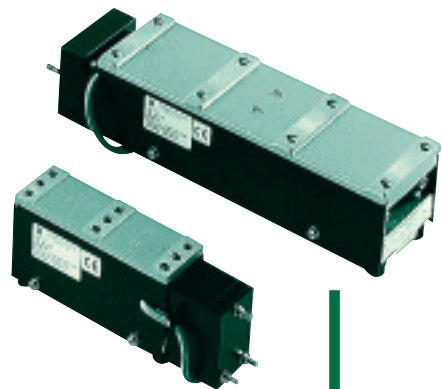
GL-1

A = Vibrator top length	320
B = Length of counter mass	320
C = Fastening measure	285
C1 =	12,5
C2 =	70
C3 =	4 x M6
F = Total width	117
G = Vibrator top width	105
H = Total height	100 +/- 2
L = Total length	ca. 410
Weight of the linear feeder drive unit	8,5 kg
Max. load of the linear track (Including Components)	5 kg
Max. track length	600
Current input	0,87 (A)
Protection class	IP54
Vibrating frequency	100 Hz
Connection cable length (to control box)	1.400

Suitable stand type

(see page 18)

UTL 2



GL-1

Voltage 200V/50 Hz. Available with special voltages 110V/220V and frequencies 50Hz/60Hz

